



INDIAN CURE WAX

The ART of construction chemicals!



info@indianconstructionchemicals.in

INDIAN CURE WAX is applying on freshly cast concrete, newly exposed concrete surfaces, forming a temporary membrane to retain sufficient moisture for effective curing to take place. Used for applications for large areas of concrete such as pavement, runways and bridge decks, vertical or sloping surface as on towers, chimneys, canal linings, columns, and beams, where water curing is difficult, inaccessible, or unreliable



DESCRIPTION:--

INDIAN CURE WAX is a white, low viscosity wax emulsion incorporating an alkali reactive emulsion breaking System ensuring that the emulsion breaks down to form a non penetrating continuous film immediately upon contact with a cementitious surface preventing excessive water evaporation and in turn permits more efficient cement hydration. This reduces shrinkage increasing durability. Once formed, the membrane remains on the concrete surface until broken down and eroded by natural weathering. Further treatment, if required, may be necessary to remove the membrane remaining after curing by wire brushing or other mechanical means.

INDIAN CURE WAX is also ideal where the concrete surface of a floor slab is to be left as 'finished'

ADVANTAGES:-

- One time application: Provides moisture barrier for the whole of the curing period
- Eliminates other curing methods like additional water, hessian, or sand
- Very dependable without risk of erratic or poor curing and facilitates efficient
- Mitigates risk of drying, shrinkage, cracks, and dusty surfaces
- Non-toxic and non-inflammable and easy to brush or spray

Standard compliance: INDIAN CURE WAX complies with ASTM C309-90 standards.

Application Exposed concrete slabs:

INDIAN CURE WAX should be applied to the newly placed concrete slab as soon as possible after it is free from visible surface water, ideally within 1 to 2 hours after placing. Shuttered and precast concrete: INDIAN CURE WAX should be evenly applied to all surfaces as soon as formwork has been removed or the precast member is demoulded

Coverage:

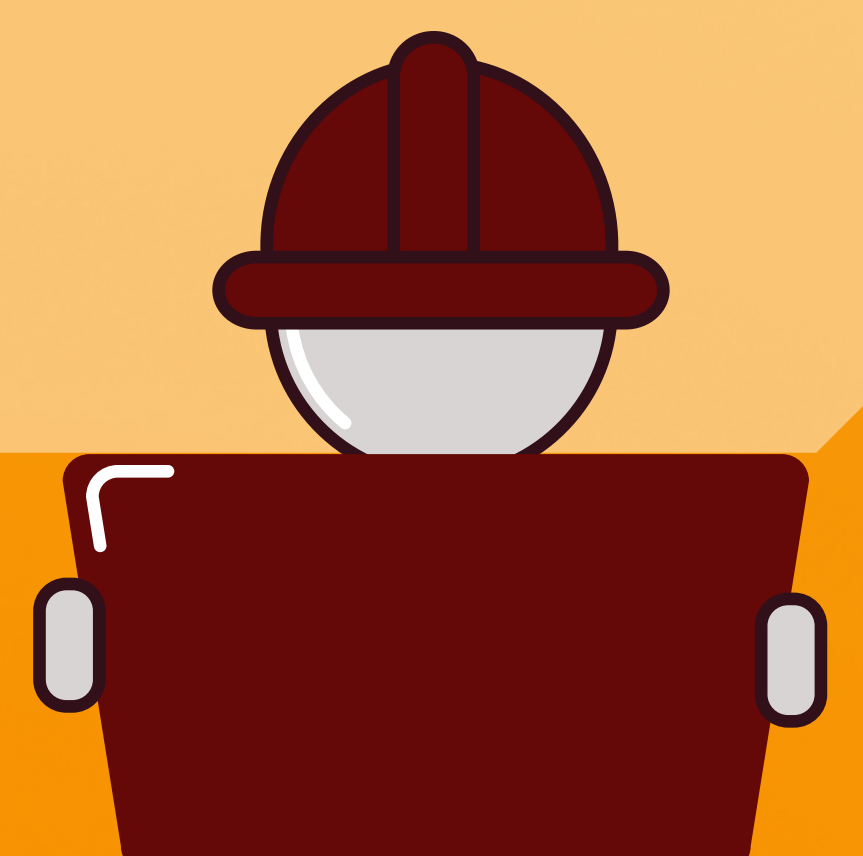
Generally in the range of 1 LTR/50 SQ FT SINGLE COAT APPLICABLE

Packaging:

INDIAN CURE WAX is available in 20 and 200-liter drums.

Storage:

INDIAN CURE WAX has a shelf life of 6 months when stored at below 15°C. Containers should be airtight to prevent surface evaporation. Freezing or prolonged exposure to direct heat or sunlight must be avoided.



Precautions:

INDIAN CURE WAX is nontoxic. It is advisable to wear goggles when applying. Inhalation should be avoided. skin contact with the compound occurs it shall be washed with clean water and a skin conditioning cream shall be applied. If INDIAN CURE WAX comes into contact with eyes it shall be washed with clean water. If irritation persists, immediate medical attention shall be sought. If the compound is swallowed, vomiting should not be induced but medical assistance shall be obtained immediately

Fire:

INDIAN CURE WAX is water-based and hence non-flammable.



Properties:

Color Bulk liquid -
White Minimum
application
temperature - 10°C