



INDIAN FLOOR HARDENER

The ART of construction chemicals!



info@indianconstructionchemicals.in



Non metallic, monolithic surface hardening compound



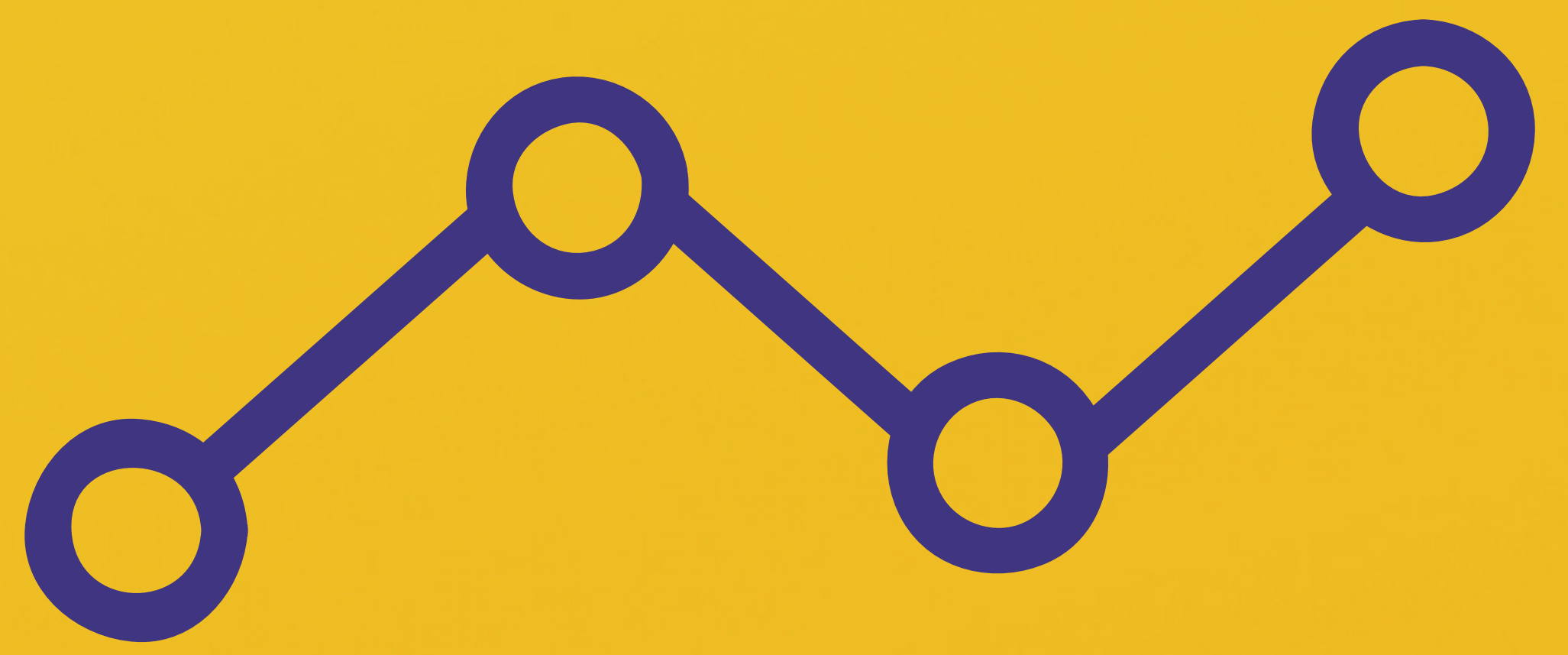
INDIAN FLOOR HARDENER provides a highly abrasion-resistant surface to concrete floors by the dry shake-on the method which ensures that the hardwearing surface bonds monolithically to the base concrete. They are ideally suits for all industrial areas subject to the heaviest traffic, e.g loading bays, trucking lanes, car parking, workshops, machine shops, ramps, and spillways.



DESCRIPTION:-

- INDIAN FLOOR HARDENER is a quality-controlled, factory blended powder that is ready to use on-site. They contain special hardwearing aggregates which have been selected for abrasion and wear-resistant properties as well as shape and size.
- These latter considerations, together with the use of high-performance workability admixtures, produce a material that is easy to trowel into the surface of fresh, wet concrete.
- INDIAN FLOOR HARDENER cures monolithically to provide a dense, non-porous surface that is extremely hardwearing and abrasion-resistant.
- Monolithic cure ensures that problems normally associated with thin “granolithic” screeds, viz, shrinkage, cracking, etc. are completely overcome.
- Being non-metallic, INDIAN FLOOR HARDENER provide a non-slip surface that will never rust and disintegrate.

ADVANTAGES:-



Non-metallic so does not rust or stain

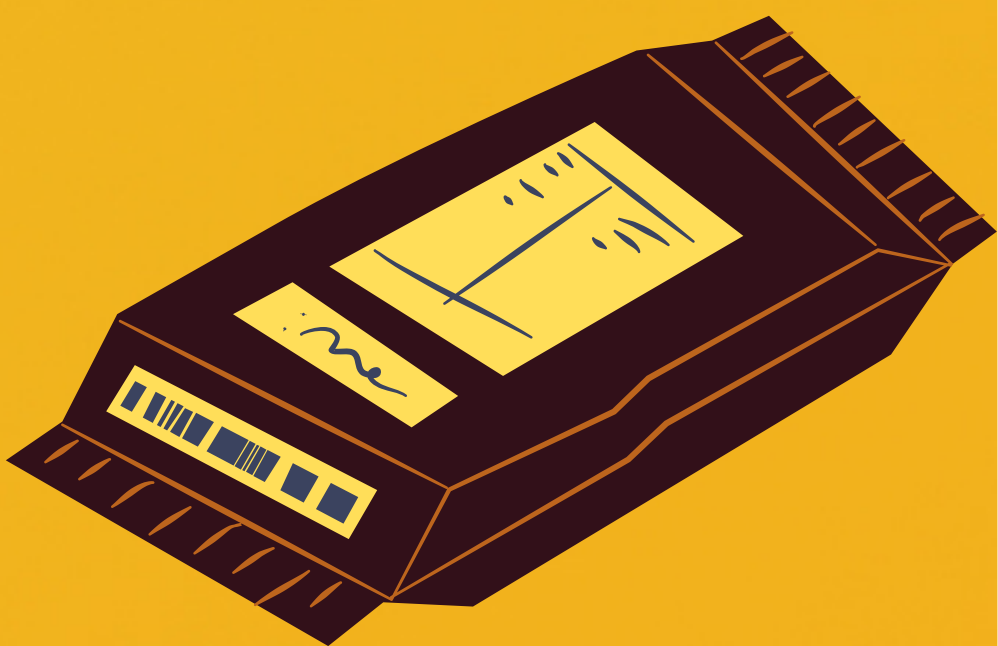
Provide a hard, abrasion-resistant surface

Forms monolithic bond with base concrete

Easy and economical to apply



INDIAN FLOOR HARDNER shall possess a minimum compressive strength of 60N/mm^2 When tested as per IS : 516-1959



Packaging:

INDIAN FLOOR HARDENER is supplied in sealed **25 kg** attractive HDPE bags.



Shelf life

If kept in original undamaged packing, the shelf life of INDIAN FLOOR HARDENER should be at least 24 months under normal warehouse conditions.

Application instructions:-

Base concrete

The base concrete should have a minimum cement content of 300kg/m³. The concrete mix should be designed to minimize segregation and bleeding. The concrete should have a slump of between 75 and 100 mm

Ready to use

INDIAN FLOOR HARDNER is supplied ready to use on site. Cement or aggregates should never be added to INDIAN FLOOR HARDNER.

Surface treatments

Penetration type surface treatments are recommended to give low porosity and dust-proof property.