

IS : 15477



CM/L-7200167506



INDIAN NSA GOLD HEAVY-DUTY (WHITE)

SPECIALLY POLYMER-MODIFIED NON SKID TILE ADHESIVE

The ART of construction chemicals!



info@indianconstructionchemicals.in

PRODUCT DESCRIPTION:-

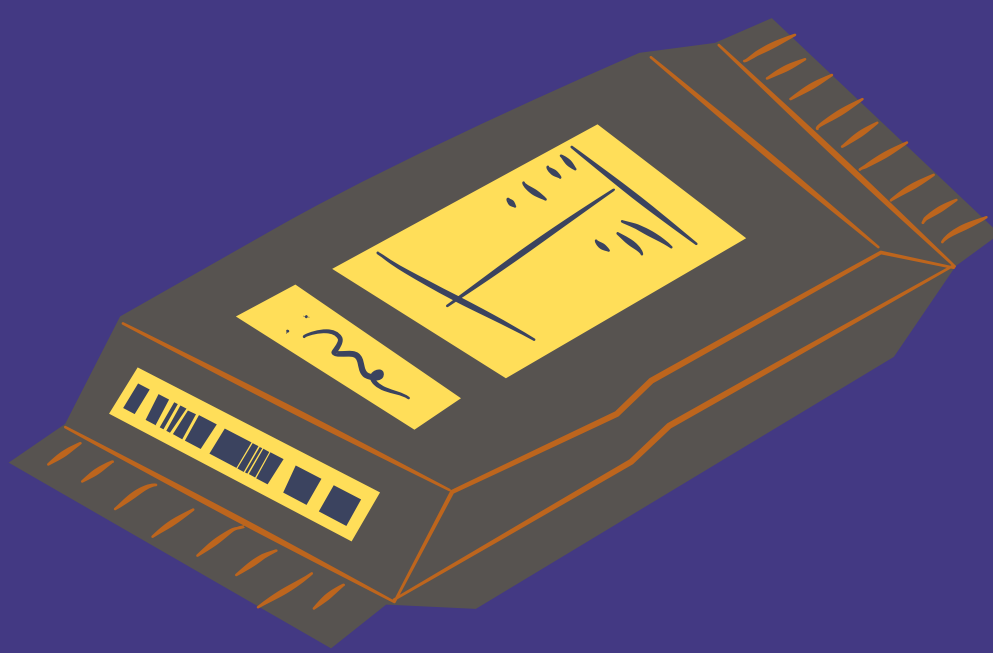
INDIAN NSA GOLD HEAVY DUTY (WHITE) is a Polymer modified white cement-based adhesive, suitable for fixing ceramic tiles for floors & walls in interior situations. Suitable for fixing ceramic tiles up to 6 mm bed thickness (can be extended up to 12 mm thickness in the area of limited extent). The set adhesive is water-resistant and is suitable for use in showers and bathrooms.

NOTE:-

Not recommended for direct use onto gypsum plaster (wall finishes), paint or metal.



INDIAN NSA GOLD HEAVY DUTY (WHITE) complies to the adhesion requirements of IS 15477 : 2004 Type 1 "Specification for Adhesives for use with Ceramic Tiles and Mosaics." AREAS OF APPLICATION Walls , Floors, Interiors, Dry areas, Wet areas, Showers,



PACKAGING: 20 KG ATTRACTIVE LAMINATED BAGS.

BACKGROUND / BASES :- Cement Sand Rendering Brick Work / Concrete & Cement Sand Screed .

NOTE :- Do not use the shower for at least 2 weeks following the completion of grouting .

STORAGE AND SHELF LIFE :- INDIAN NSA GOLD HEAVY DUTY (WHITE) has a shelf life of 24 months when stored in normal dry conditions.

PRECAUTIONS:

Keep out of reach of children

Wear suitable protective clothing, gloves, and eyes/face protection.

After contact with skin, wash immediately with plenty of clean water.

In case of contact with eyes rinse immediately with plenty of clean water and seek medical advice.

FEATURES:-

- Good bond strength & Water-resistant
- Easy mixing & application
- Complies to the requirement of IS 15477: 2004 Type1

TECHNICAL SPECIFICATIONS :-

TEST NAME

INITIAL SETTING TIME

FINAL SETTING TIME

POT LIFE

SPLITE TENSILE STRENGTH 28 DAYS

COMPRESSIVE STRENGTH 28 DAYS

TENSILE ADHESION IS 15477:2004 WITH 14 DAYS CURE

SHEAR Adhesion IS 15477:2004 14 Day Air 2

TEST REPORT

130 MINUTES

270 MINUTES

1.5 HOURS

0.75 N / mm²

46 N / mm²

0.9 kN

2.75 kN

PHYSICAL PROPERTIES INDIAN NSA
GOLD HEAVY-DUTY (WHITE) :- 27± 2°C

Mixed Density 1.80 - 1.85 g/cc

Bed Thickness up to 6 mm

Walls Use 6 mm X 6 mm square notch trowel Floors.
Use 12 mm X 12 mm square notch trowel

Mixing Ratio 1 PART Water to 4 PART POWDER.

Adhesive Open Time 30 - 45 minutes

Temperature -30°C to 150°C

Resistance VOC Content 0.84 g/L

Note: - Suitability depends on surface-level/flatness Up to 12mm in areas of limited extent.

COVERAGE ESTIMATES:-

Pack size Coverage 20 kg approx. 3 kg/m² using a 6mm x 6mm square notch trowel.

Note:-

Coverage will depend on the nature and flatness of the surface and the method of application.

For good coverage, it is vital that all surfaces are smooth, plumb, level and free from defects .

APPLICATION INSTRUCTIONS :

Substrate Preparation Before starting any work ensure that the base is Sufficiently flat to permit the specified flatness of finished tiling, bearing in mind the permissible thickness of the adhesive. Suitable for tiling in the service conditions to which it will be exposed. Surfaces to be tiled must be dry, clean and free from loose material and contamination.



SITE WORK INSTRUCTIONS SURFACE CONSIDERATIONS:

- New Cement Sand rendering/Brick/Block Wall Before commencing tiling, allow plastered surface to air dry for at least 2 weeks.
- New Concrete Bases: Before commencing tiling, ensure that bases have been allowed to air dry for at least 4 weeks
- Existing Concrete/Screed Bases Cut out all loose or hollow portions and make good with a 1:3 cement : sand mortar applied over a slurry bonding coat and let it cure and dry for 7 days.
- Slurry bonding coat is prepared by mixing 2 parts of portland cement to 1 part of INDIAN SBR G - 9. Brush on the base immediately before applying the adhesive.
- Mixing Add INDIAN NSA GOLD HEAVY DUTY (WHITE) to clean water. Mix thoroughly until a lump-free mortar is obtained.
- A 20 kg bag will require approx. 4.5 - 5 litres of water to obtain a slump-free consistency.
- The adhesive is immediately ready-for-use and has a pot life of 3 hours.
- No further water should be added. Where mixing by weight is not possible, volume mixing can be carried out at site in the ratio of 1 : 3 (water : powder)

APPLICATION

- 1** Spread not more than the area which can be tiled within the open time of the adhesive.
- 2** Comb the adhesive to the required depth using a suitable square notch trowel.
- 3** Press the tiles firmly into position with a slight twisting action, checking periodically that good contact is maintained with the back of each tile. Leave no voids behind tiles.
- 4** Tiles should be fixed within 15 minutes of adhesive being applied, depending on the porosity of the surface and atmospheric conditions. Tiles can be adjusted up to 5 - 10 minutes after fixing. Touch the adhesive ribs periodically and if a skin has formed, remove the adhesive and apply a new layer.

⑤ Leave adequate joints between individual wall and floor tiles unless self Spacing tiles are used.

⑥ Clean off surplus adhesive from the tile face and between joints.

Note: Do not use in damp conditions and temperature less than 5°C. Use suitable clamps along with adhesive at the time of installation of tiles at height of more than 6m. Leave movement joints at every 3m vertical interval and fill with a flexible sealant as per BS 5385.



GROUTING: - Grouting should be carried out after 24 hours of tiling. Use the appropriate grouting material from the range of cementitious and epoxy grouts.

Note: The addition of INDIAN GROUT ADMIXTURE to cement - based grouts will enhance adhesion to tile edges, increase water-resistance and improves flexibility. CLEANING Tools and containers may be cleaned using clean water when the adhesive is still fresh. The hardened adhesive can be removed from tools mechanically.



NOTE :- The information supplied in this datasheet is based upon extensive experience and is given in good faith in order to help you. Our Company policy is one of continuous Research and Development; we therefore reserve the right to update this information at any time without prior notice. We also guarantee the consistent high quality of our products; however as we have no control over site conditions or the execution of the work, we accept no liability for any loss or damage which may arise as a result thereof.